



# JLT EB SA understands what's important in your world

The roots of JLT Employee Benefits SA (JLT EB SA) is a story of South African entrepreneurship, the journey of a business with humble foundations established to disrupt the traditional standards and ultimately seek to change the face of corporate healthcare and retirement funding for the betterment of people.

We have a very specific ideology when it comes to our consulting offering. We believe our insight into your needs, the expertise we hold in providing advice to our clients, as well as the highest levels of service delivery, sets us apart from our competitors.

Our solution architecture has been crafted with specialist services and appropriate deliverables and performance indicators, ensuring that we help you achieve your results. Our servicing approach is agile and above all, we strive to align our solutions with your business.

We deliver better results simply because we always do what is right for our clients.



# PROTECT.

## YOUR WORLD



JLT understands what's important to you. Our consulting offering has your best interests in mind. We pride ourselves on our business ethos, our exceptional service delivery and our professional advice.



Our Healthcare Consulting offering takes a holistic view of your healthcare arrangements with the aim of reducing expenditure while still providing you with the benefits that you need – we look at the individual and tailor our advice to you.

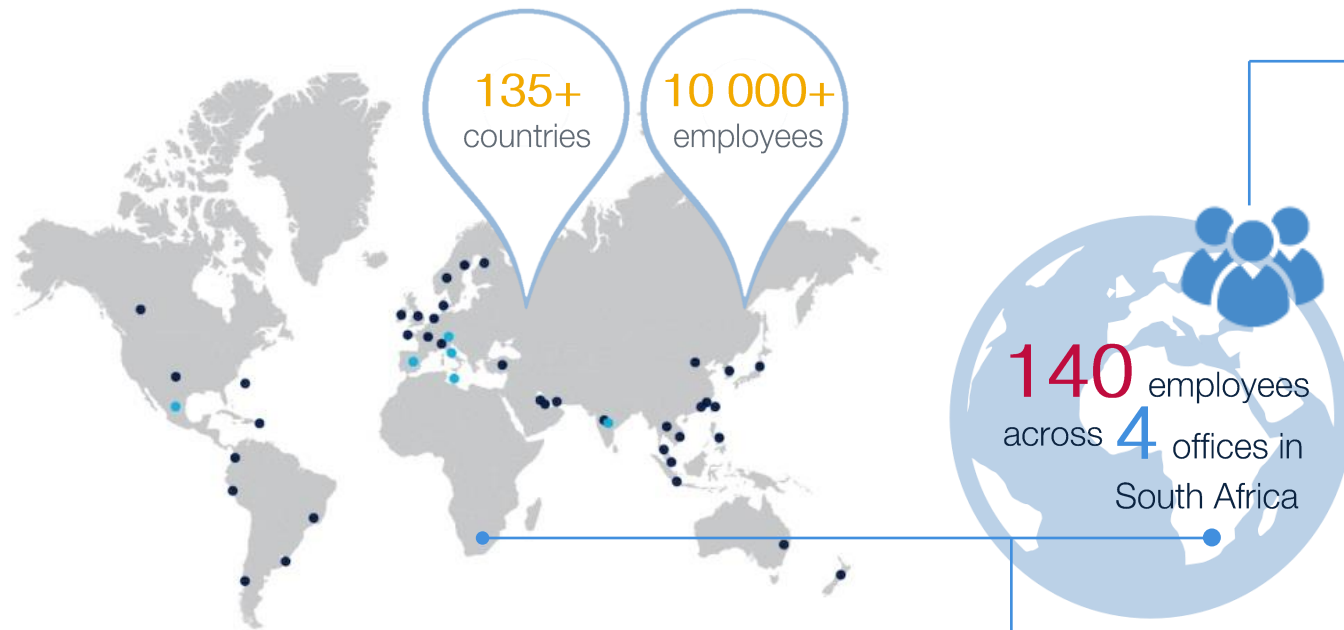


Retirement is an overwhelming prospect for everyone and the decisions that need to be made can be complex. Our specialised Retirement Fund Consulting offering provides you with a depth of expertise and gives you the comfort of knowing that we will always do what is best for you.



# GLOBAL KNOWLEDGE

As members of the JLT Group plc, we have a global footprint of over 10 000 employees in offices across 40 territories, and are able to offer our multi-national clients employee benefit solutions in more than 135 countries through the JLT International Network.



# LOCAL EXPERTISE

We are a business that believes in building lifelong partnerships with our clients. We believe that we are perfectly positioned to help you achieve your employee benefit goals and objectives into the future. Our team of local experts have the right knowledge and skills to offer solutions that align to your business and the results you want to achieve.

Contact us to find out how we can help your business.

T: +27 (0)11 361 0000

[www.za.jlt.com](http://www.za.jlt.com)

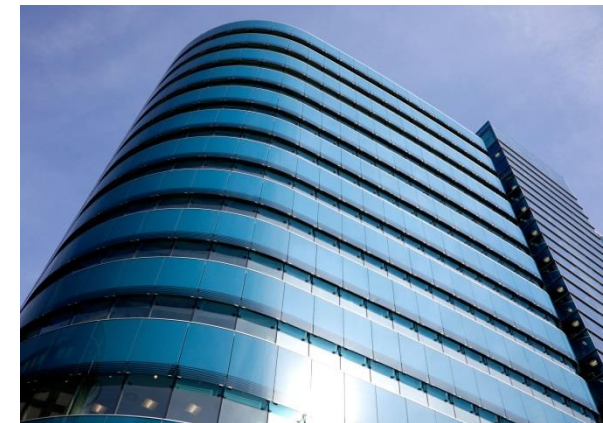
Nicol Main Office Park, Block D, 2 Bruton Road, Bryanston, Gauteng, 2191  
JLT Employee Benefits SA (Pty) Ltd. An Authorised Financial Services Provider and Member of the JLT Group plc



OUR PEOPLE  
140 employee benefits & risk experts



OUR CONSULTING  
intrinsic value: health & retirement



OUR RECORD  
250 clients: 5 years of 100% retention



OUR KNOWLEDGE  
global insight augments local expertise



OUR TRANSFORMATION  
level 2 BBBEE rating



OUR COMMITMENT  
helping clients achieve results